



his·to·tech·nol·o·gy (n):

Technical histology concerned especially with preparing and processing (as by sectioning, fixing, and staining) human and animal tissue.

NATIONAL SOCIETY FOR HISTOTECHNOLOGY |



NSH's mission is to empower the profession of Histotechnology through collaboration, education, and innovation. Over the past year, these efforts have focused on education, and providing the NSH member with tangible new benefits, designed to make learning more accessible.



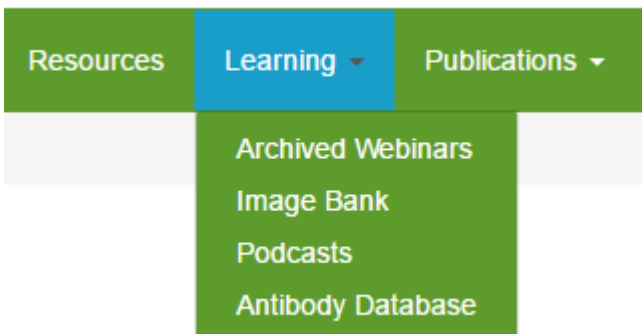
Now Live.

IMAGEBANK

Right here on the Block.

Explore →

In 2016, NSH launched its members only, online community, The Block, which serves as both a platform for open-forum discussion, and as a host site for a collection of histology resources. Among these tools is the Image Bank, a collection of tissue sample slides that can be used for troubleshooting in the lab, or studying for the HT/HTL exam.



There are new features added regularly to The Block, located under the learning and resource tabs. The resource tab contains checklists, reference guides, and primers that can be used for more efficient laboratory management. The Learning tab includes other lab training tools such as archived webinars, the antibody database, and NSH's recent addition, Podcasts.

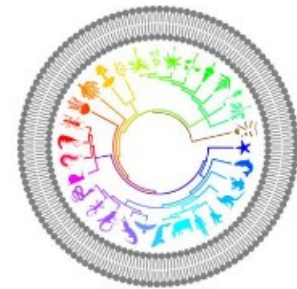
NSH currently has two podcast series, the 2016 Poster Presenter Series, which reviews posters presented at the 2016 S/C, and Women in Histology, a series of interviews with successful female members of NSH. The Women in Histology Podcast Series will be released in March in honor of the U.S National Women's History Month.

# Welcome to learn.nsh.org

CONTINUING EDUCATION FOR HISTOLOGY PROFESSIONALS



Learn.nsh.org, NSH's new online learning center offers individuals the ability to purchase webinars to view on demand, for continuing education credit. For members unable to access contact hours through their labs, this is an easy and affordable way to get the credits needed to maintain certification. NSH members receive a discount on all courses.



Comparative Histology  
1 NSH Contact Hour

\$30

Add to cart

### MediaLab Exam Simulator

Question 19 of 100 : Anna Admin  
Histology B Questions: Staining (40-50%)

Progress

Time Elapsed	0h 0m 32s
Question Details	
Answer Provided	0
Answer Not Yet Provided	100
Correct	0
Incorrect	0

Copper deposits in the liver, as seen in this image, may be indicative of what disease?

Please select the single best answer

- Paget's
- Wilson's
- Hirschsprung's
- Alzheimer's

Submit Answer

This past year, NSH also introduced the Histology Exam Simulator, an online test prep tool for the HT/HTL exam. Questions are updated regularly to make sure members are getting the most relevant study material.

Quality Education | Timely Tools & Resources | Life-changing Connections



For more information about the benefits of NSH visit the NSH website, or call the NSH office, to speak with a membership representative.

National Society for Histotechnology | [www.nsh.org](http://www.nsh.org) | 443-535-4060 |